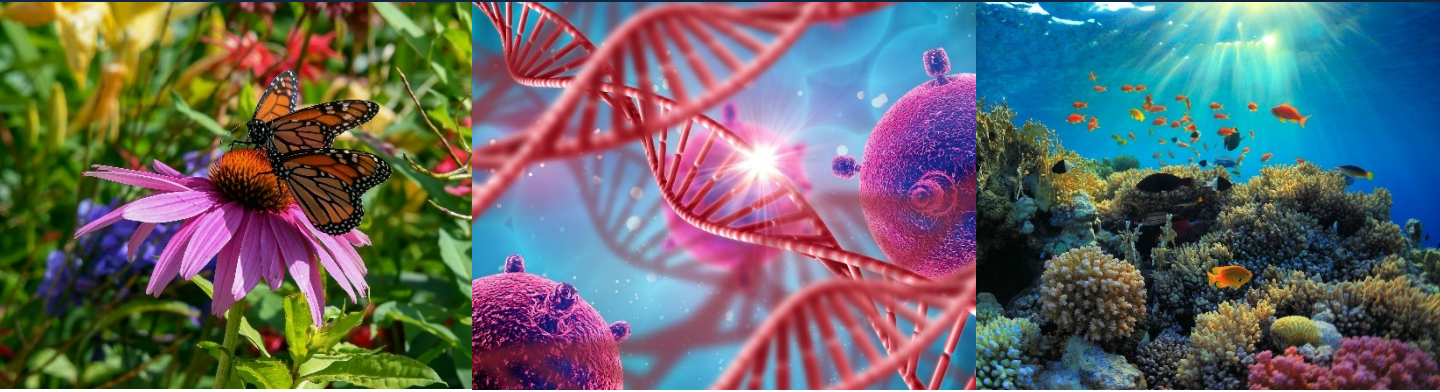


PhD Scholarships in August 2024 Early Offer Admissions



WHY BIOLOGICAL SCIENCES IN NUS?

We have a strong research culture centered around three main research foci:

- **Cell, Molecular and Developmental Biology**
- **Ecology, Biodiversity and Environmental Biology**
- **Biophysical Sciences, Computational and Structural Biology**

We house world-class academics who are dedicated in their research work as they are in your graduate experience. You will get a chance to work closely, alongside them for your doctorate studies. You will also have a chance to conduct research using state-of-the-art facilities the Department has to offer.

On top of that, we have a strong publication record – every year, over half of the scientific papers from the Department are contributed by graduate students alone. Many of the papers are published in the top scientific journals such as *Nature*, *Science*, *Cell*, *Nature Genetics*, *Nature Immunology*, *Nature Biotechnology*, *Nature Structural Biology*, *Current Biology*, *Proceedings of the National Academy of Sciences USA*, *EMBO Journal*, etc.

Our department is consistently amongst the top ranked by subjects– **we are ranked the 14th globally and first in Asia**, according to the QS World University Rankings by Subject 2022.

EARLY OFFER ADMISSIONS

For more information on research areas, faculty members and our PhD program, please refer to, www.dbs.nus.edu.sg/staff/faculty/
www.dbs.nus.edu.sg/education/graduates/doctor-of-philosophy/

We welcome all interested applicants to submit your application online via the [NUS Graduate Admission System](#), **before 1 August 2023**. Please email the application number to dbsbox6@nus.edu.sg and indicate that it is for the Early Offer Admission application.

The standard deadline for the regular application is 15 November 2023. The outcome for the Early Admission Offer will be released around in September - October 2023 for August 2024 intake.

NUS RESEARCH SCHOLARSHIPS

Research Scholarships are awarded by NUS to outstanding graduates for research leading to a higher degree at the University. Each Scholarship carries a monthly stipend of up to \$2700 stipend (tax free) per month and a full research fee subsidy.

Research scholars may be eligible for an additional stipend of up to \$500 per month upon passing the PhD qualifying examination, which is normally held 12 to 18 months after registration of candidature. The top up is renewable annually, subject to good performance. It may be awarded up to a maximum of 24 months but not more than 48 months of candidature.

If you have a consistently strong academic record, you may submit an appeal for a waiver of TOFEL/IELTS and GRE.

Top students will be nominated for the prestigious President's Graduate Fellowship (PGF) with higher stipend.

For more information on the PGF, please refer to nusgs.nus.edu.sg/scholarships/

